


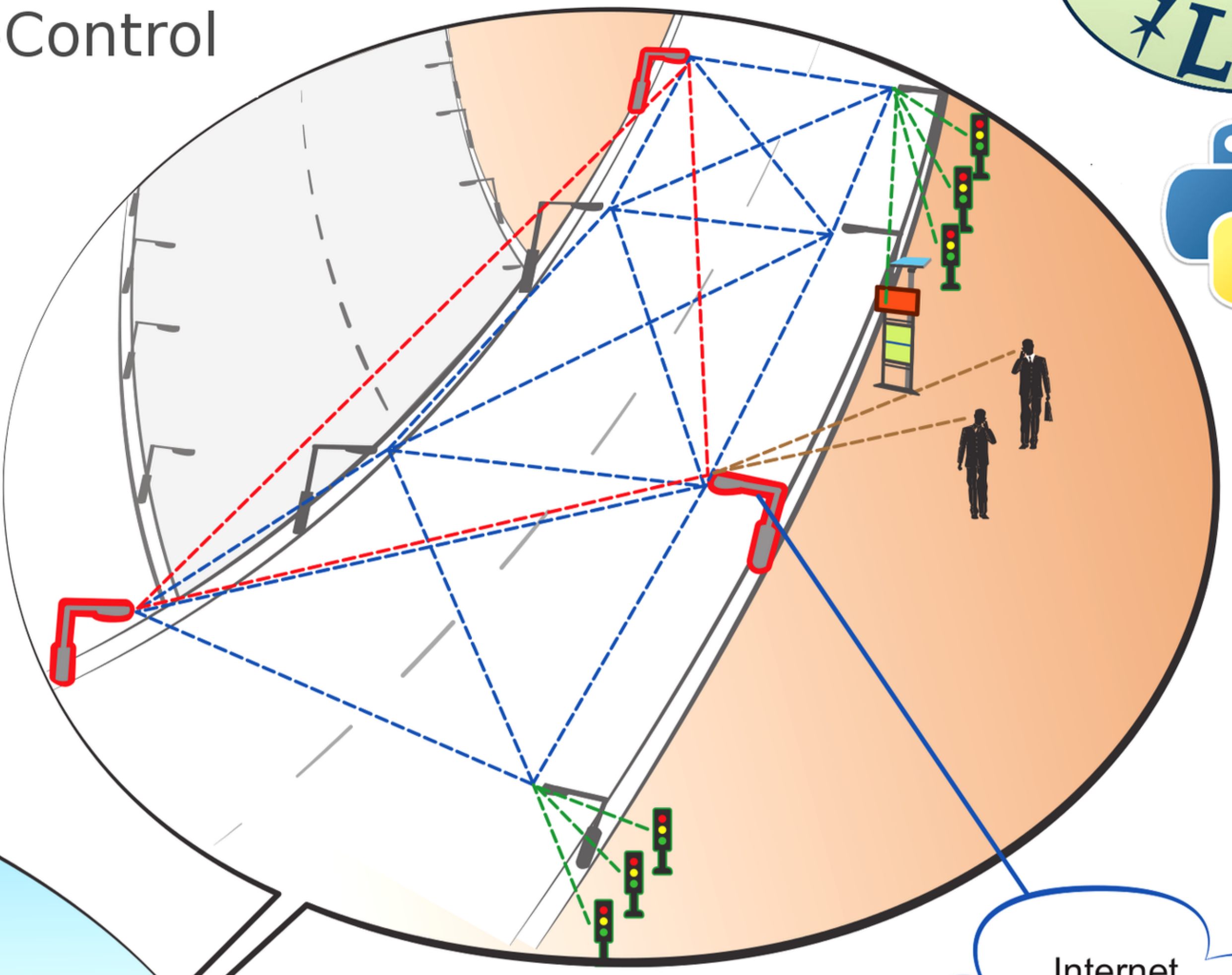
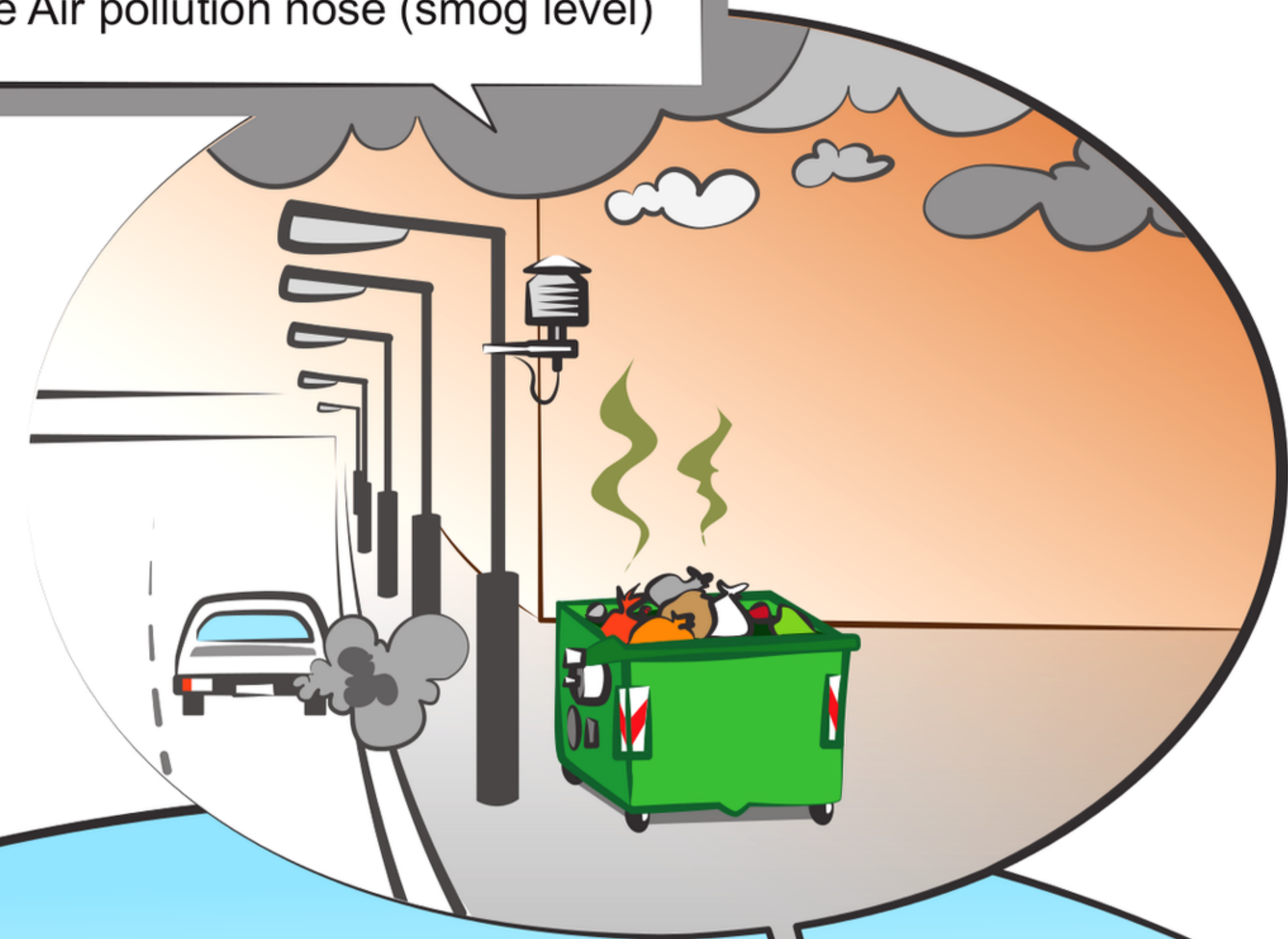
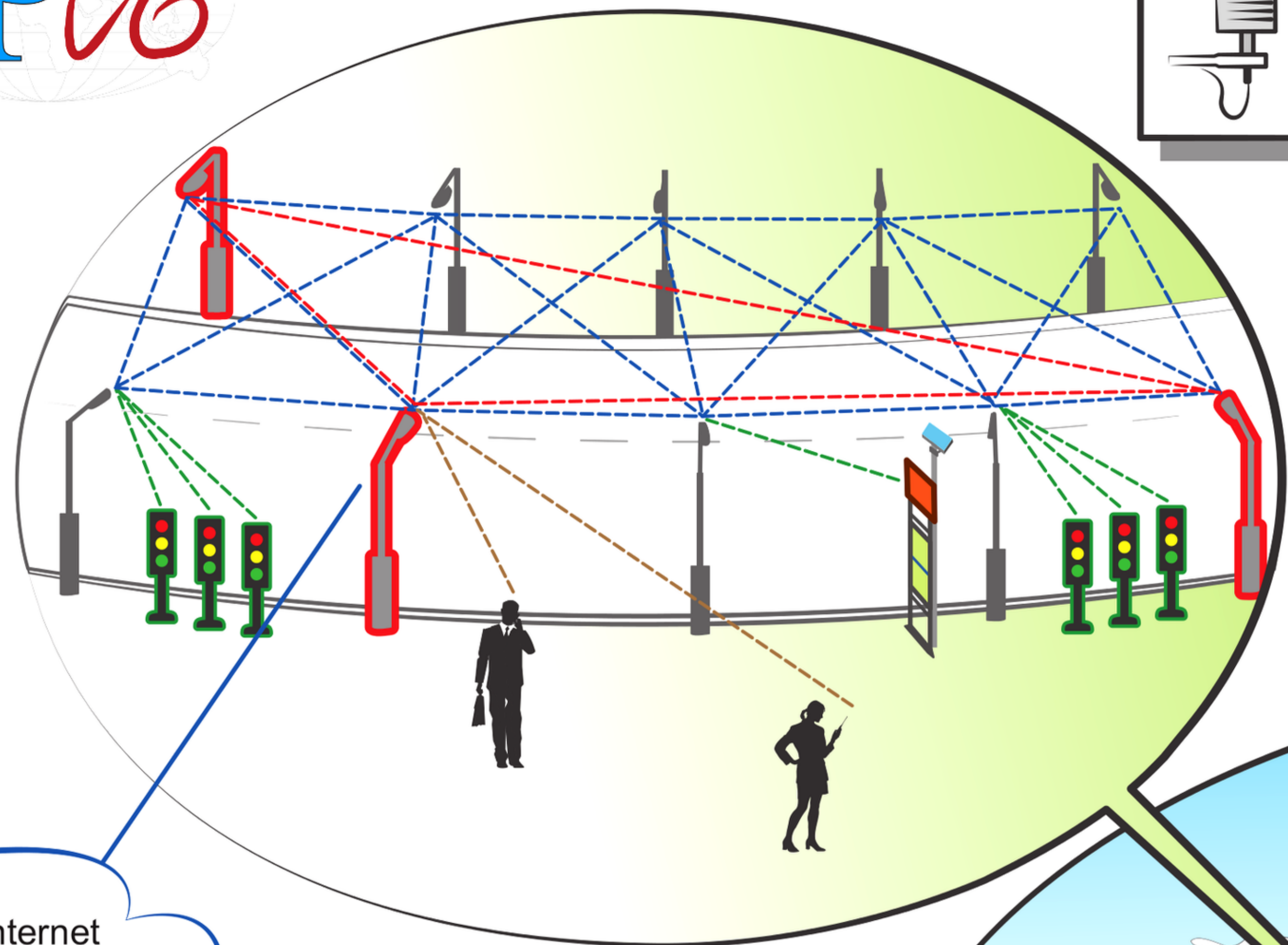
IPv6

Decentralized Automation-Control

Automation Endpoints running in Lisp, Python or Both

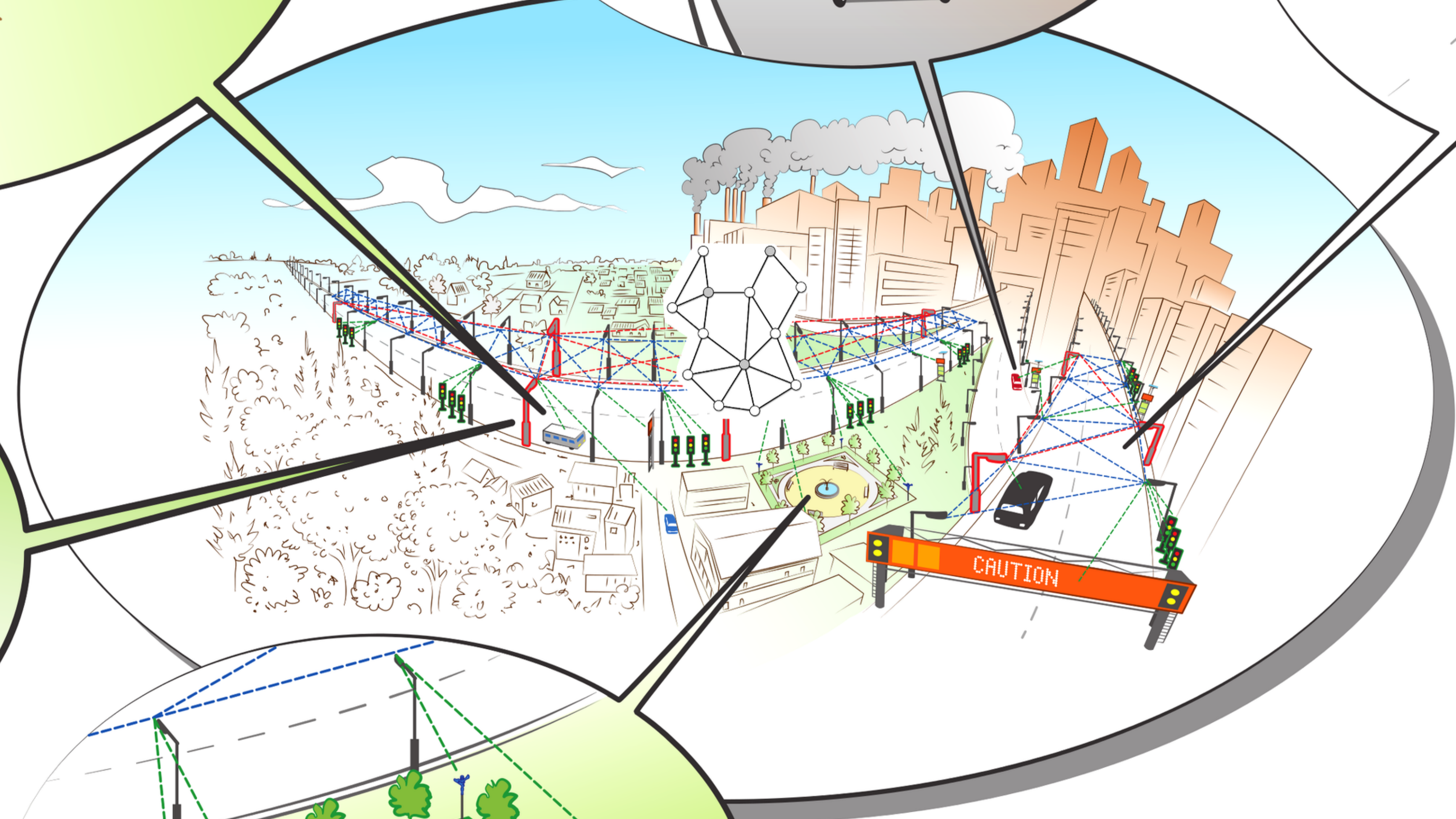






 **Electronic Nose:**
VOC organic compounds (smell nose)
Composite Air pollution nose (smog level)

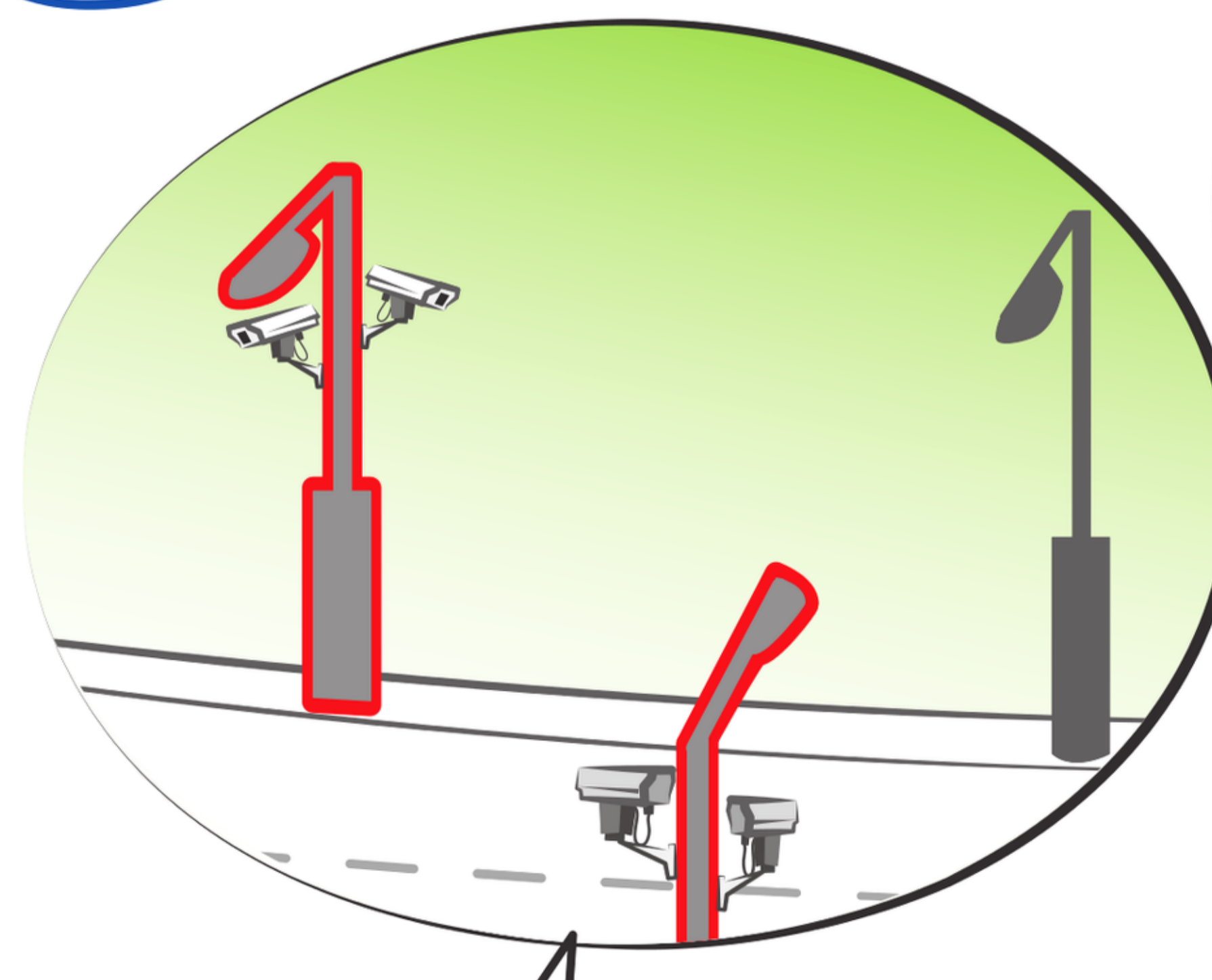



Internet
ADSL / Fiber / UMTS

Internet
ADSL / Fiber / UMTS

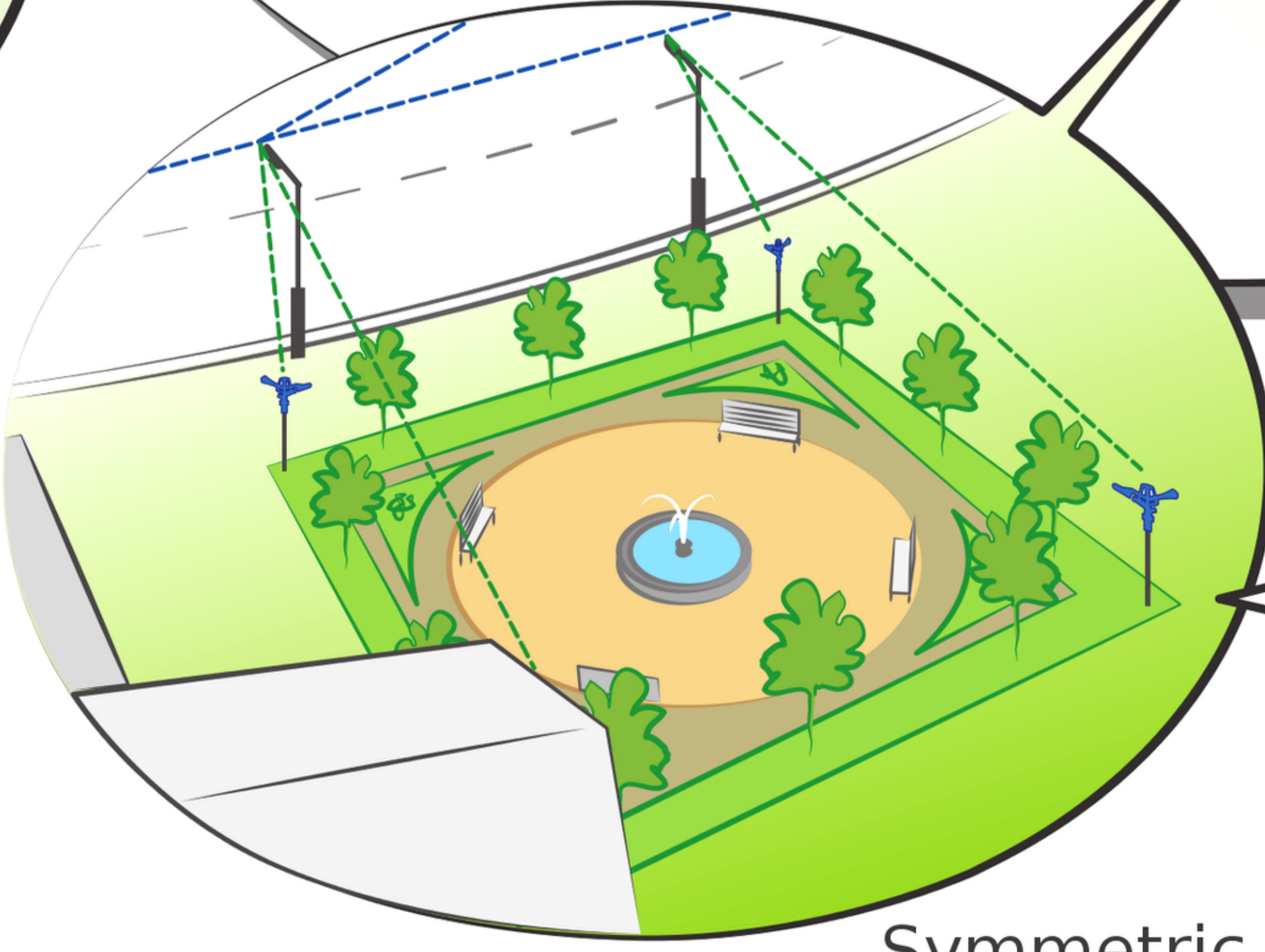



-  6LoWPAN Mesh
-  6LoWPAN Client
-  WiFi Mesh
-  WiFi Client



 **Privacy Camera (low resolution)**
to only detect incidents / fire
Count vehicles / Traffic analysis
Intelligent dimming of Lamps

Microcontroller-camera (OpenMV)
message-based output assuring
no citizenship surveillance/spy



 **IPv6 Hexabus / BACNet**
For City Automation network
Garden irrigation example

NetBSD Area Concentrators
Uplink to Network, 5GHz WiFi Mesh
2.4GHz WiFi Access Point (to citizenship)
- All devices Solar/Battery/Wire(night) Powered -

Symmetric Self-Stabilizing Fault-Tollerant Hardware